



Allansford and
District Primary School
Frank St, Allansford 3277

"Allansford Kids are Friendly Kids"

Email: allansford.ps@education.vic.gov.au

Phone: 03 5565 1382



KEY DATES

WEEK TWO (THIS WEEK)

Friday 4th February

*WebEx Assembly

WEEK THREE (NEXT WEEK)

Tuesday 8th February

*Parents Club @ 7.30 via WebEx

Wednesday 9th February

*Specialist classes commence

Friday 11th February

*WebEx Assembly

WEEK FOUR

Tuesday 15th February

*School Council 1 @ 7.30

WEEK FIVE

Monday 21st February

*Year 3/4 - BioCATS excursion -Geelong

Tuesday 22nd February

*SC Elections open

WEEK SIX

Monday 28th February

*Education Week

Tuesday 1st March

*SC Elections close

WEEK SEVEN

Monday 7th March

*Performance - Wadjiny

*School Council Elections

Tuesday 8th March

*Parents Club 2 @ 7.30 pm

Thursday 10th March

*ADPS Athletic Sports

WEEK EIGHT

Monday 14th March

*Long Weekend

WEEK NINE

Thursday 24th March

*ADPS School Photographs

ALLANSFORD ALIVE SCHOOL NEWSLETTER

PRINCIPAL WELCOME

Welcome back to all members of our school community for the 2022 school year. We especially would like to welcome our 29 new Foundation students for their first year at ADPS. We currently have 174 students enrolled for 2022. In 2022, we are running eight classrooms and three specialist classes.

STAFF WELCOME

Welcome back to all staff for the 2022 school year. Staffing in many schools has already been impacted and we are so lucky to be starting with almost a full complement. I would especially like to welcome Miss Claudia Dean to the ADPS team for 2022. Miss Dean will be teaching in the Year 3/4A classroom.



READING ASSESSMENTS

Many thanks to the parents for booking their child or children in for a reading assessment this week. These assessments are critical in determining teaching 'pitch points' for each class and for ensuring students are reading good fit books.

SCHOOL PROFILE

Principal

Mr. Wes Allen

Classroom Teachers

Foundation – Miss White
Year F/1 – Miss Marquand
Year 1/ – Mrs. Arnott
Year 2 – Mrs. Hill
Year 3/4A – Miss Dean
Year 3/4B – Mrs. Bellman
Year 5/6A – Mr. Dwyer
Year 5/6B – Mrs. McLaren

Specialist Teachers

Music – Mrs. McMahon
STEAM – Mrs. Sheppard
Japanese – Mrs. Sheldon

Education Support Staff

Mrs. Jeannette McArdle
Mrs. Deb Henry
Mrs. Sheree Clark

On-Going Volunteers

Trish Fimmel
Gerardine McVilly

Business Manager

Ms. Andrea Lyons

Cleaner

Gary Brown
Rebecca Brown

Bus Driver

Peter Caton

Crossing Supervisor

Graeme Smith



SCHOOL CLEANING

Many thanks to Gary and Rebecca Brown for their cleaning over the holiday break. The floors were polished, carpets cleaned, the windows washed, and classrooms given a good going over. Well done!



SCHOOL GROUNDS

Many thanks to Hamish Dinwoodie for his work in maintaining the school grounds over the semester break. Hamish maintained the watering, cut the grass and managed weed spraying. Well done, Hamish!



TESTING AND TAGGING

Many thanks to Mr Matt Gower for completing our Testing & Tagging requirements over the school break. There were over 1500 electrical appliances and leads requiring testing. Well done, Matt!



LEARN to LEARN

In the first two weeks of the 2022 school year, students in all classrooms will participate in what we label the "Learn to Learn Program." This is where students co-construct with their teachers and peers the conditions that create a positive environment for learning. They will develop a Bee Matrix that highlights what being Respectful, Responsible, Safe and a Good Learner looks like in their classroom. They will explicitly teach social and emotional competencies that are critical to the point of need for their students based on the resources from Respectful Relationships Program.

RESILIENCE RIGHTS & RESPECTFUL RELATIONSHIPS

FIRST 20 DAYS OF READING

All classrooms will follow a unit of study designed for the beginning of the school year that lays the groundwork for the way students will work during their Reading Workshops. Norms and behavioural expectations for working during the Reading Workshop are established. This is integral to teaching students about our "Instructional Model" for reading.

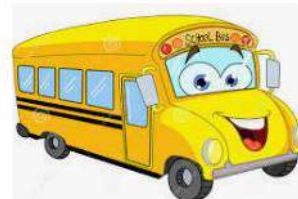


BUS GUIDELINES

The following are key compliance items for safe bus travel for students.

- Wear seatbelts
- Remain seated until bus has stopped
- Do not damage the bus
- Comply with driver instructions
- No Bullying / Teasing / Aggressive Behaviour

Parents are expected to be at the bus stop prior to departure and collection times.



OUTSIDE SCHOOL HOURS CARE

Our before and after school program commenced on Wednesday 2nd February.

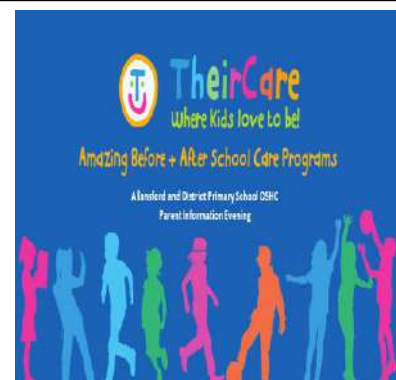
Before school - 7.00 - 8.45 am

After school - 3.30 - 6.00 pm

How to Enrol - Visit TheirCare website: www.theircare.com.au

Click on 'Book Now' in the top right hand corner to register your child's details.

You can access this from the school's website under the ATTEND tab



Safe



Respectful



Responsible



A Learner

COVID SAFE

The start of the year sees us follow the 3 V's of Covid safety:

1 – Vaccination

2 – Ventilation

(Open windows – fans – air purifiers)

3 – Vital safety measures

(Masks – physical distancing – hand washing)

Rapid Antigen Testing

For the first 4 weeks of term, twice-a-week testing on school days is strongly recommended – Monday & either Wednesday or Thursday.

Testing will be conducted at home, and parents must report any positive result. There is no requirement to report a negative result.

Where a positive result is recorded by a student on a rapid antigen test, their parent/carer or student must report that result to the Department of Health via the [COVID-19 Positive Rapid Antigen Test Self-Reporting Form](#) or call centre on [1800 675 398](tel:1800675398).

The parent/carer or student must also report the result directly to the school, preferably using the new [RA Test Portal](#) or by a written note or phone call to the school.



FOUNDATION WEDNESDAYS

Foundation students will not attend school on the following Wednesdays in Term 1:

Wednesday 8th February

Wednesday 16th February

Wednesday 23rd February

Wednesday 2nd March

Wednesday 9th March.

Foundation students will commence fulltime attendance following the long weekend in March commencing Tuesday 15th March.

Foundation students will be scheduled for English On-Line Testing and Numeracy On-line Testing on one or more of the above Wednesday's.



Assessments



ADPS ATHLETIC SPORTS

Thursday 10th March



SCHOOL PHOTOGRAPHS

Thursday 24th March



TheirCare
Where Kids love to be!

Amazing Before + After School Care Programs

Allansford and District Primary School OSHC



Safe



Respectful



Responsible



A Learner



Safe



Respectful



Responsible



A Learner